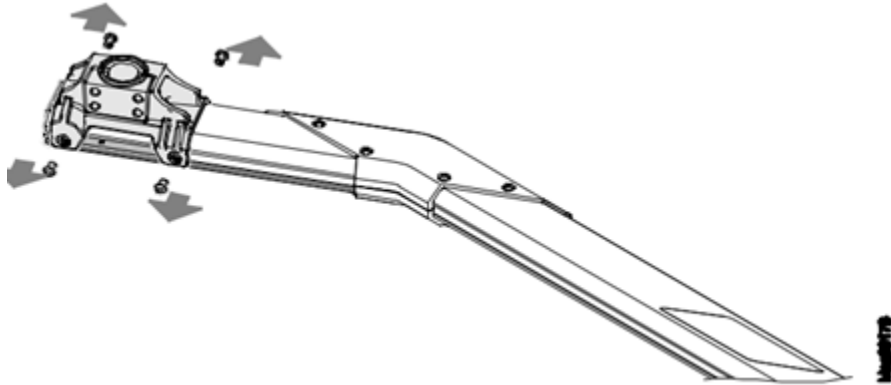




Inclement weather shutdown - 2020 Model

Exterior:

1. First, bring all the Tommy Balls inside the wash.
2. Once all tommy balls are in the wash bring in all loose signage.
3. If your lane gate arms are removeable bring these inside as well. The gate arm should be held in place by four screws as shown below (if it is removeable). These will only need to be loosened as they only hold the arm in place by pinching the arm in place.



4. Bring in all hoses for vacuums. these should disconnect near the canopy.





Tommy Car Wash Systems | 648 S Point Ridge | Holland, MI 49423 | Tommycarwash.com/Support

5. Take all canopies off as well. This can be done by loosening the turnbuckles shown below and then removing the ring from the turnbuckle. Once this is done you will then loosen all clamps shown in second photo, and remove those canopy rings.





Interior:

1. Once the canopies are removed, move back to your MCP 1 and 2. In the back room we will want to shut off all overloads in both cabinets, which can be done by turning the round dial counterclockwise 90 degrees. Once these are turned off, switch the breakers down into the off position. An example of both overloads and breakers in the off position will be shown below.

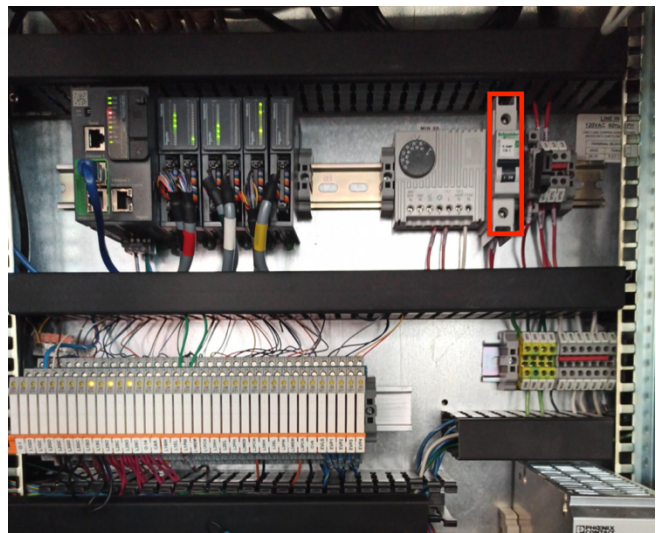




2. To the left of the MCP1 there is a MDP (Main Distribution Panel), as pictured below. Shut off all breakers by flipping the switch towards the OFF position.



3. In the office move over to your SIC cabinet. In the SIC, turn off all surge protectors, these can usually be found mounted to the sides or back panel of your SIC cabinet. Once these have been turned off, turn off the breaker for the Lane controller PLC, CB1.



4. Once CB1 has been powered off and all devices in the cabinet are confirmed to not have power, move to the breaker panel to the right of the SIC/IT cabinet. In this breaker panel, you will want to turn all the breakers off to ensure that no damage can happen to any equipment that is left plugged in. Shut off all breakers by flipping the switch towards the OFF position.



5. Next Panel to shut down would be the Vac Panel. Shut off all overloads as well as circuit breakers in vac panel.





6. Next is the MDP next to the vac panel that we will be shutting off all breakers. Shut off all breakers by flipping the switch towards the OFF position.



If you feel you need extra help with this, please reach out to support and we can walk you through this over facetime or another form of video call.

Thanks!