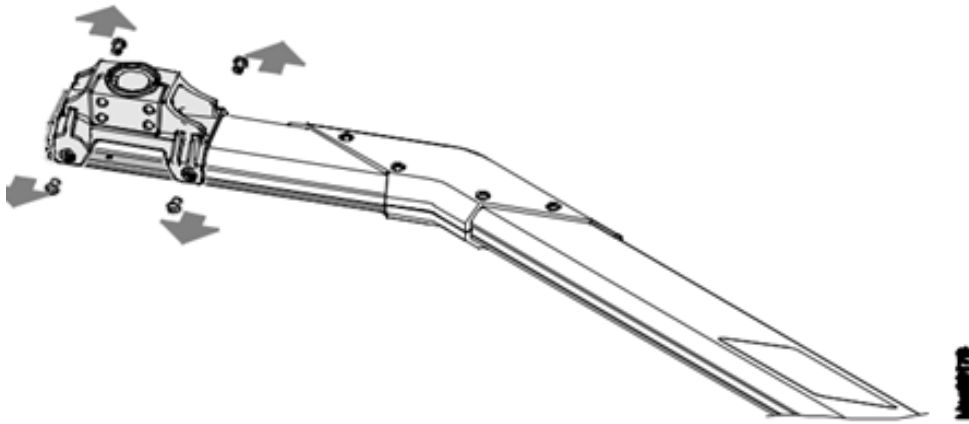




Inclement weather shutdown - Non-2020 Model

Exterior:

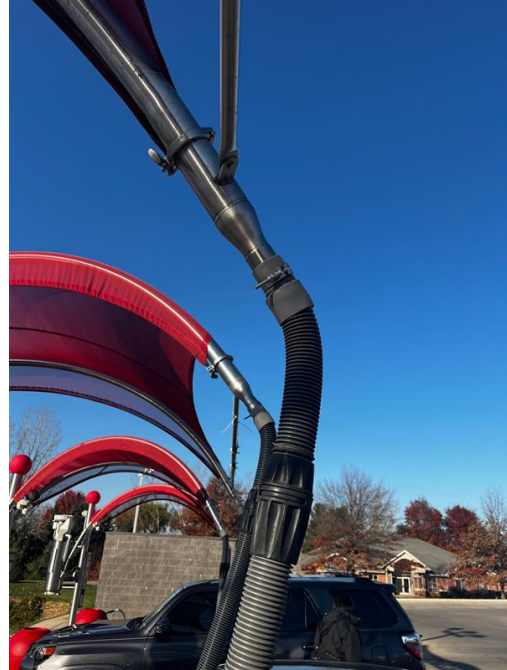
1. First, bring all the Tommy Balls inside the wash.
2. Once all Tommy Balls are in the wash bring in all loose signage.
3. If your lane gate arms are removeable bring these inside as well. The gate arm should be held in place by four screws as shown below if it is removeable. These will only need to be loosened as they only hold the arm in place by pinching the arm in place.





Tommy Car Wash Systems | 648 S Point Ridge | Holland, MI 49423 | Tommycarwash.com/Support

4. Bring in all hoses for vacuums. These should disconnect near the canopy.



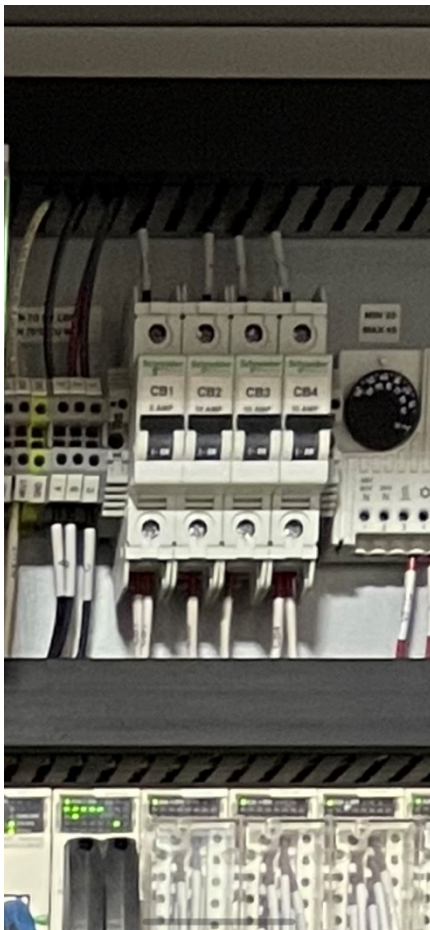
5. Take all canopies off as well. This can be done by loosening the turnbuckles shown below and then removing the ring from the turnbuckle. Once this is done you will then loosen all clamps shown in the second photo below and remove those canopy rings.





Interior:

1. Once the canopies are removed move back to your MCP 1 and 2. In the back room we will want to shut off all overloads in both cabinets, which can be done by turning the round dial counterclockwise 90 degrees. Once these are turned off next switch the breakers down into the off position. Examples of overloads and breakers are shown below.





2. To the left of MCP1 is a MDP (Main Distribution Panel), as pictured below. Shut off all breakers by flipping the switch towards the OFF position.



3. In the office move over to your IT cabinet. In there, turn off all surge protectors, these can usually be found lying near the lane controller and PC's. Once these have been turned off, turn off the breaker for the Lane Controller Control Cabinet (labeled CB1).



4. Once CB1 has been powered off and all devices in the cabinet are confirmed to not have power, move to the breaker panel to the right of the IT cabinet. In this breaker panel you will want to turn all the breakers off to ensure that no damage can happen to any equipment that is left plugged in. Shut off all breakers by flipping the switch towards the OFF position.



5. Next panel to shut down would be the Vac Panel. Shut off all overloads as well as circuit breakers in vac panel.





6. Next is the MDP next to the vac panel, where we will be shutting off all breakers. Shut off all breakers by flipping the switch towards the OFF position.



If you feel you need extra help with this, please reach out to support and we can walk you through this over facetime or another form of video call.

Thanks!