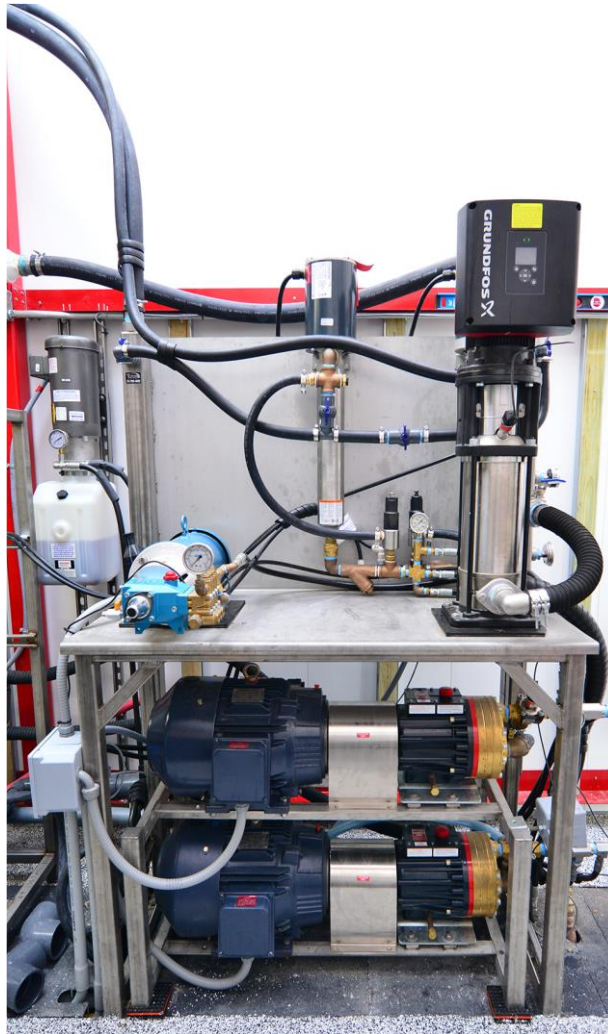


## All-In-One High Pressure Pump Station



Description: **All-In-One High Pressure Pump Station**

Part No: **E-SE-HP**

Updated: **6.01.18**

## General Warning

It is important that you read this manual in its entirety before attempting to install, operate, or service the corresponding Tommy Car Wash Systems equipment. Observe all safety information and any additional instructions included with this equipment. Failure to observe these instructions may result in personal injury and / or property damage.

## System Description

Tommy Car Wash System's proprietary All-In-One High Pressure Pump Station raises the bar for car wash plumbing and pumping setups. Centralize all your wash pumping needs in a compact, 4' x 4' package to drastically reduce installation and plumbing costs.

*Note: Unit assemblies may vary. Contact Tommy Car Wash Systems with questions or for particular assistance with your specific unit.*

## Technical Data

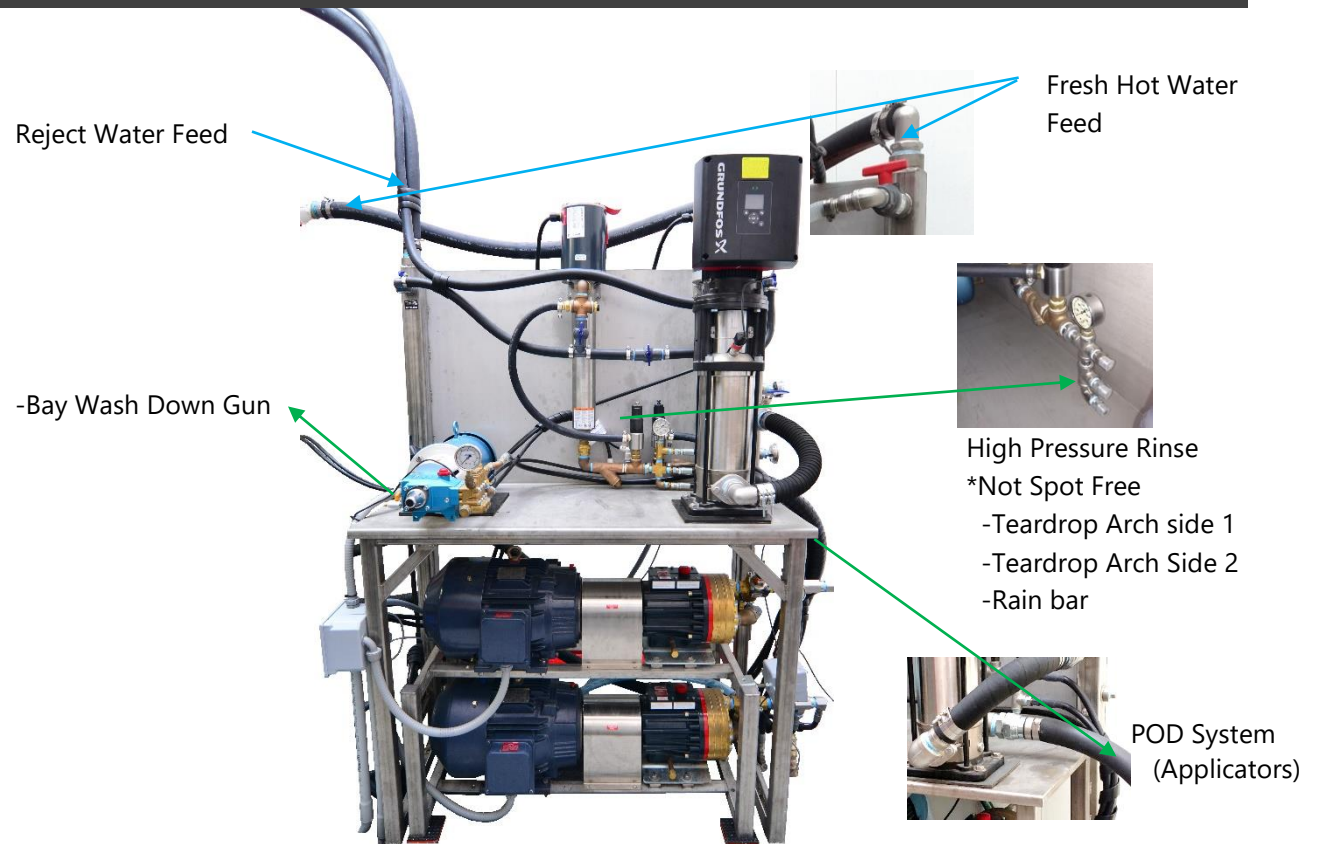
- Construction: Stainless Steel
- Space Required: (Backroom) 4' x 4' + hookups
- Power Requirements: 480V / 208V
- Shipping Weight: approx. 385 lbs.
- Noise Level: 68 Db

## General Safety Information

ALL WARNINGS, CAUTIONS, AND ADVISEMENTS below concern the safe installation, operation, and service of your Tommy Car Wash Systems equipment. This safety information is included for your protection and should be reviewed thoroughly prior to working with or near this equipment.

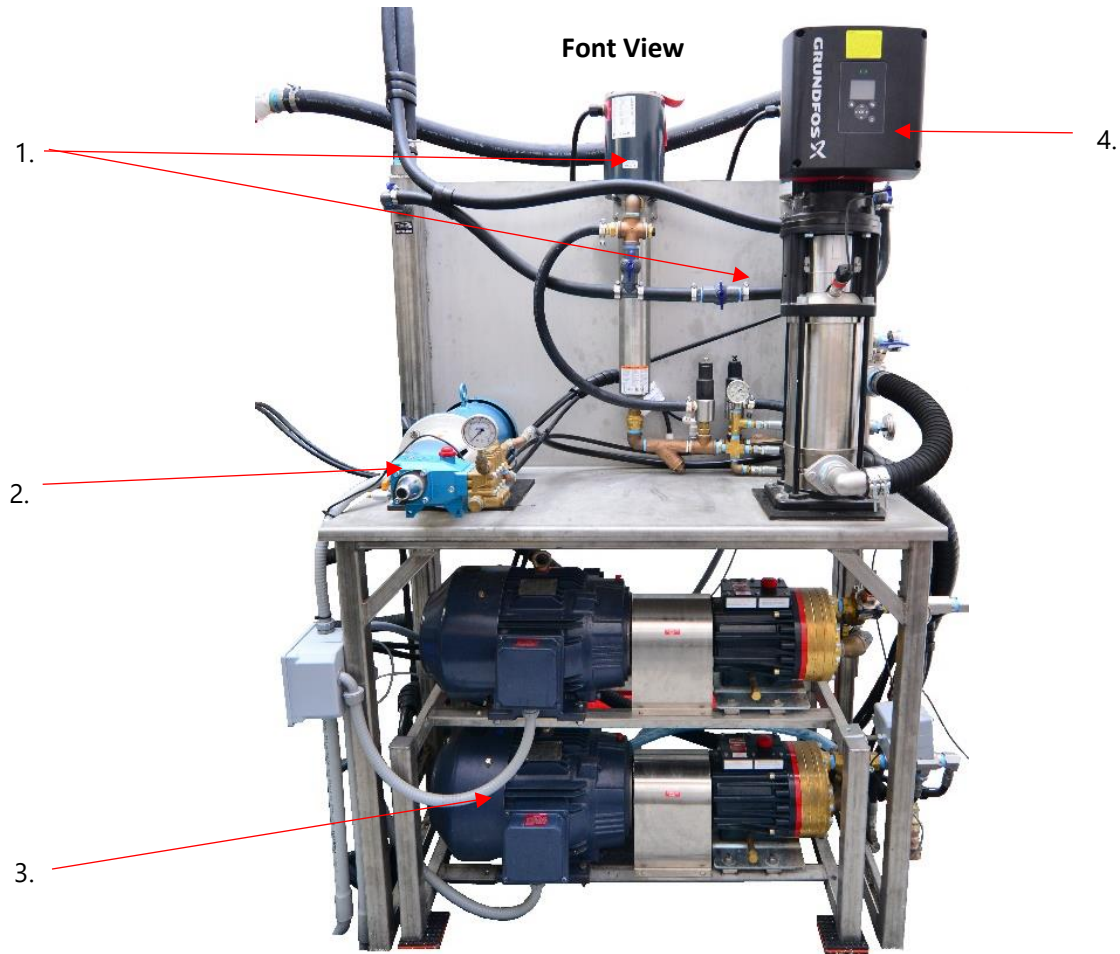
- Never service equipment while it is running.
- All personnel must be trained on the equipment and corresponding safety procedures before conducting service.
- All employees should have ready access to emergency stop buttons and should be trained on their location and operation.
- All moving and/or electrical equipment involves certain hazards. At least two qualified personnel must be on-hand during service or normal operation.
- Do not wear loose fitting clothing when working on or around moving equipment.
- All car washes must use a warning system to alert employees prior to wash activation.
- Do not attempt to operate any malfunctioning equipment.
- Unauthorized personnel or foreign objects are not permitted near functioning equipment.
- Never attempt to clean or service any area near operational equipment. Keep area clear until equipment has been fully deactivated.
- Disconnect all equipment prior to servicing.
- Do not attempt to use any equipment for any function it was not intended for.

## Pump Inlet / Outlet Feeds



**\*Note: Spot Free Rinse utilizes separate pump unit.**

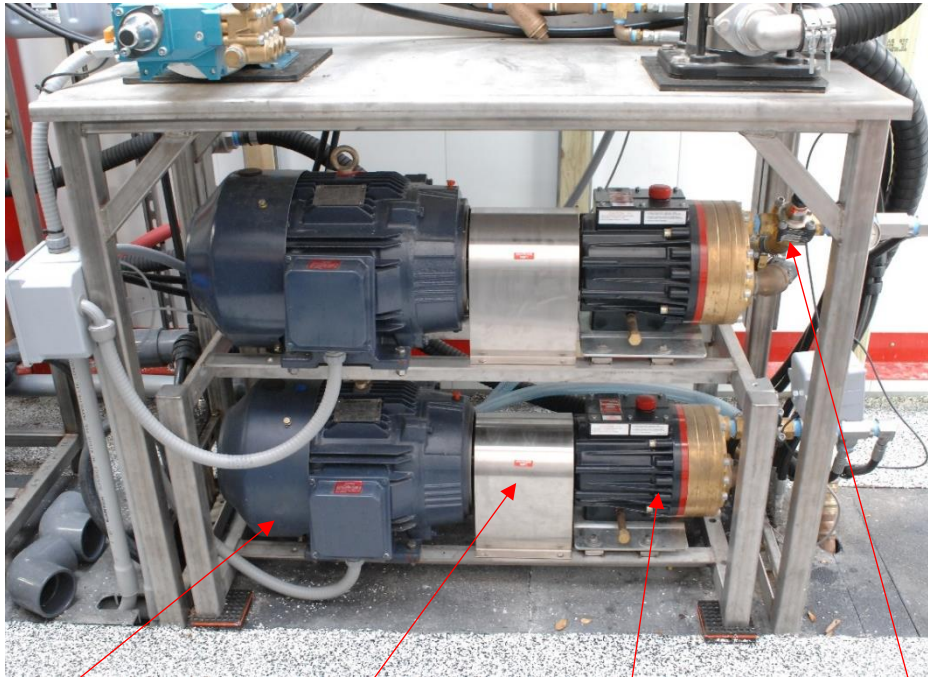
## Equipment Components



- |    |              |  |
|----|--------------|--|
| 1. | E-HFI-224    | Hydraflex Booster Pump 20 GPM (Qty 2 – 1 backup for HP rinse OR Grunfos applicator pump – adapters included) |
| 2. | P-SE-PG-2323 | Bay Wash Down CAT Pump assembly 7.5hp w/ regulator   |
| 3. | E-SE-HP-033  | Dual Stack Pump Assembly w/ Frame, Shelf, Manifolds  |
| 4. | E-SE-BP      | Grundfos High Pressure Booster Pump  |



**Insert Views**



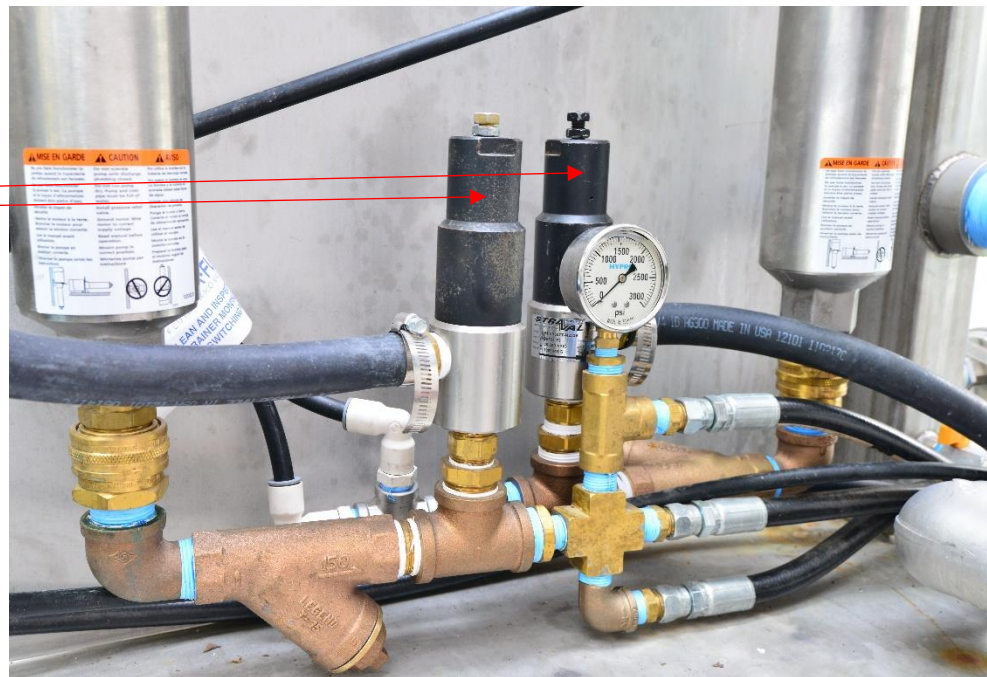
P-ELE-2015 Motor  
(x2)

P-HYD-2046 Lovejoy Couplers  
(Internal x2)

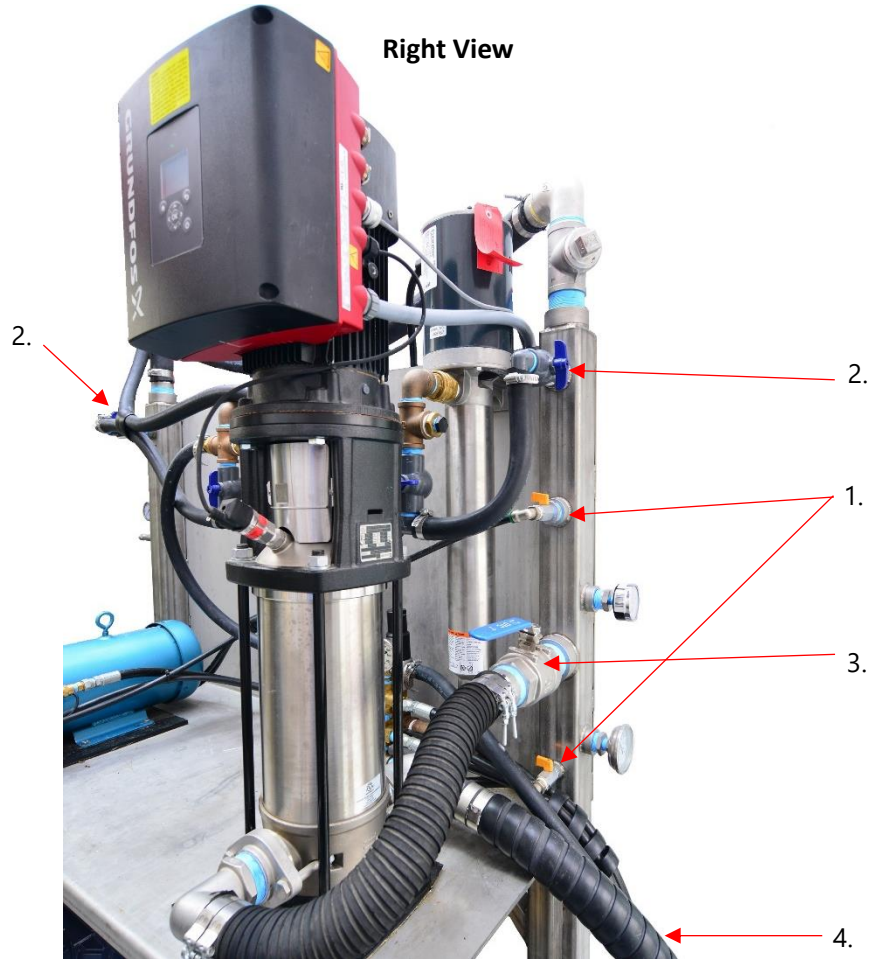
P-WAT-2022 Pump  
(x2)

P-SE-2077 Regulator  
(x2)

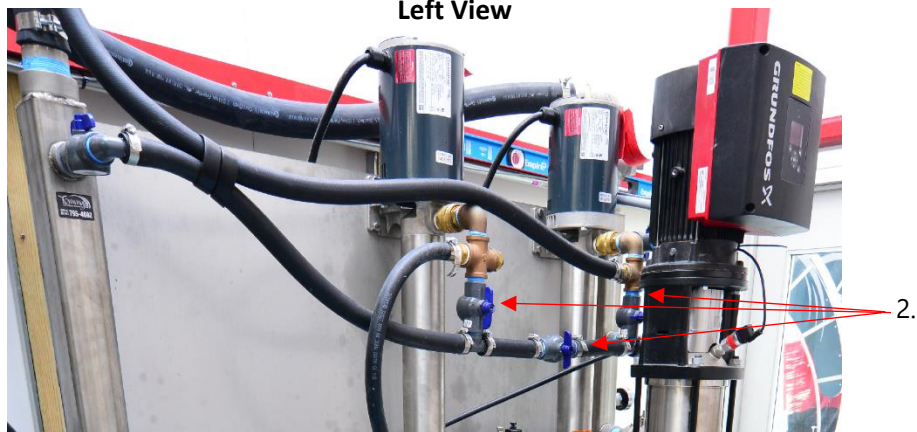
P-WAT-2200  
Unloader Valve  
4800 psi



Right View



Left View



- |    |             |   |
|----|-------------|---|
| 1. | P-WAT-2258  | 1/2" MNPT x 1/2" FNPT Mini Ball Valve- Nickle |
| 2. | P-WAT-2210  | 1" PVC Ball Valve (qty 5)                     |
| 3. | P-WAT-2370  | 2" FNPT x 2" FNPT Ball Valve- SS, 1,000 PSI   |
| 4. | P-SE-HP-202 | 2" ID Grundfos Output Hose Assembly           |



Rear View



1. P-WAT-2396 1-1/2" SS 3-Way Ball Valve (qty 2)