

Setting

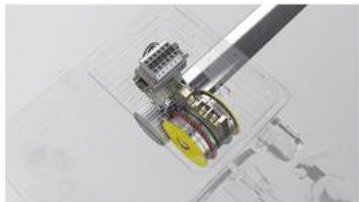


(1) Unscrew, remove and store limit switch cover with gasket.

→ The following switch functions are specified: Switch HI turns off direction of rotation I, while switch HII turns off direction of rotation II.



(2) Turn drive on motor shaft using drill and move hex head bit into limit position. During this process, observe direction of rotation of output shaft and compare to arrow showing direction of rotation.



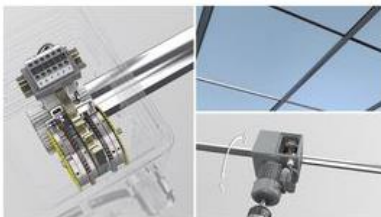
(3) Turn the three actuator rings on the limit switch in the direction of rotation determined until the limit switch roller engages untitled in the indexing groove. If the three indexing grooves are arranged in line, the three screws in the actuator rings will also be arranged in line with one another.



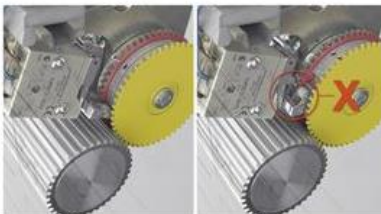
(4) Tighten screws in actuator rings using waf 1.5 hex wrench. An appropriate torque wrench (15-17 Ncm) is available as a Lock accessory.



(5) Turn drive into its other limit position in accordance with Step 2. Also turn the three actuator rings on the other limit switch as described in Step 3. Tighten down screws in the actuator rings in accordance with Step 4.



(6) Test run: Open once, then close once. Close limit switch compartment properly again.



→ X = Override limit switch, tilted condition

Note:

→ On version with END 20.40, auxiliary switches SI and SII can also be set by setting main switch HI and HII.